

Instantly connect to and manage  
your next video conference with  
**EVERGREEN™ Companion**

## EVERGREEN™ Companion

Harness the power of the EVERGREEN™ multipoint conferencing unit (MCU) with Companion, the streamlined audio-video endpoint application from Compunetix.

Comprehensive  
Audio and Video  
Collaboration

Contact  
Management

Call Details /  
Statistics

System  
Configuration

Brandable Client  
Interfaces

Internationalization

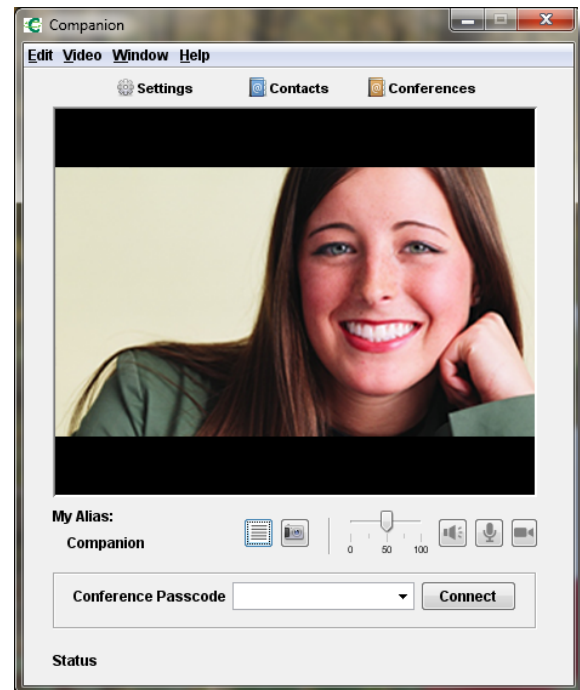
### Get to Know Companion

Companion is the conferencing solution for users who want more control at their fingertips. This versatile application must be used in conjunction with an EVERGREEN system. Companion seamlessly interfaces with the EVERGREEN MCU to allow users to connect to and manage conferences without the help of an operator. In an instant, you can initiate your conference and immediately participate in face-to-face collaboration.

### Conference Features

Some of the many capabilities available to users include:

- **Flexible View Options:** Companion features a separate video view and a full screen view option with either SD or HD video (depending on your network connectivity). As additional parties join a call, the video window splits into as many panels as there are participants. Each user is able to manage their personal video layout.
- **Instant Conference Initiation:** Users can build their own progressive conferences at any time.
- **Convenient Audio Controls:** Users are able to swiftly adjust volume and toggle their audio line (Mute/Unmute) right from the Companion interface.
- **Dynamic Self-View:** This option displays the user's own webcam video output.
- **Real-Time Statistics:** Users are able to instantly view call statistics within the Companion interface.
- **Individual Configuration:** Set connection parameters, including display name, hold image, connection rate, encoding, etc.
- **Image Viewer:** This feature enables a user to send a slideshow of captured images in lieu of live video feed.



Companion Main Window

companion

Photo courtesy PDPhoto.org

**compunetix**  
the technology of cooperation

**compunetix** Video Systems Division  
 2420 Mosside Boulevard  
 Monroeville, PA 15146  
 1.800.879.4266  
 412.373.8110  
 email: vdsales@compunetix.com  
 www.compunetix.com

## Companion Core Features

- Direct connection to the conference room of choice
- Volume control
- Video and audio mute/unmute options
- Still picture and slideshow options
- Ability to view call statistics
- Ability to set basic call parameters
- Separate video window, self-view, and full-screen mode options
- Automatically populated to the contact directory when opened and removed when closed

## Companion Plus Features

- Direct connection to the conference room of choice
- Ability to create conferences and view the EVERGREEN active conference list
- Ability to view the EVERGREEN contact list
- Volume control
- Video and audio mute/unmute options
- Still picture and slideshow options
- Ability to view call statistics
- Ability to set basic call parameters
- Separate video window, self-view, and full-screen mode options
- Custom view control
- Automatically populated to the contact directory when opened and removed when closed

## Companion Attended Features

- Direct connection to an operator (EVERGREEN systems offering attended services)
- Volume control
- Video and audio mute/unmute options

## System Requirements

- Operating System: Windows XP or Windows 7 (32 and 64-bit)
- Memory: 1 GB RAM
- 250 MB Free Hard Disk Space
- Java JRE 1.6 update 31 (or newer)
- Microsoft Visual C++ 2008 Redistributable
- Web Cam (Windows™ XP or 7 compatible)
- Latest drivers for webcam and soundcard recommended
- Connection Bandwidth: minimum 150k symmetrical for 128k (H.323) connection, recommended 460k symmetrical for a 384k (CIF) connection, 512k for a 4CIF connection and 768k+ for HD.

## Companion Plus: Contacts and Conferences

With the optional Companion Plus feature set, you can expand control – enabling users to easily access the EVERGREEN active conference and contact lists.

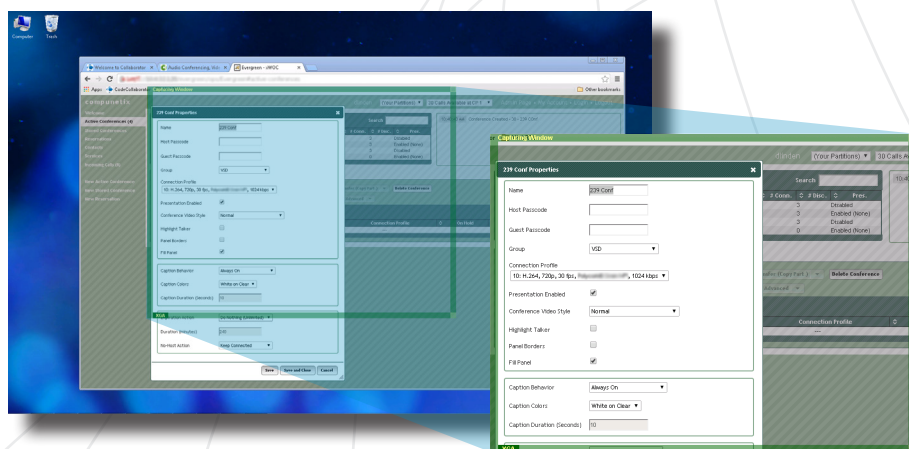


Companion Plus Main Window

Companion Plus allows users to create their own point to point and multipoint calls on the fly. The presence-aware contact list keeps track of configured users while the conferences list displays all conferences currently active on the system. Both lists are displayed on opposite sides of the main window (shown above) and are accessed at the click of a button.

## Companion: Desktop Sharing

Companion enables desktop sharing with conference participants via a secondary video channel. The capture window can be set to share the full desktop, a portion of the desktop, or instantly adjusted to match video resolution.



Companion Desktop Sharing